

Scotnet Webmail Using Netscape

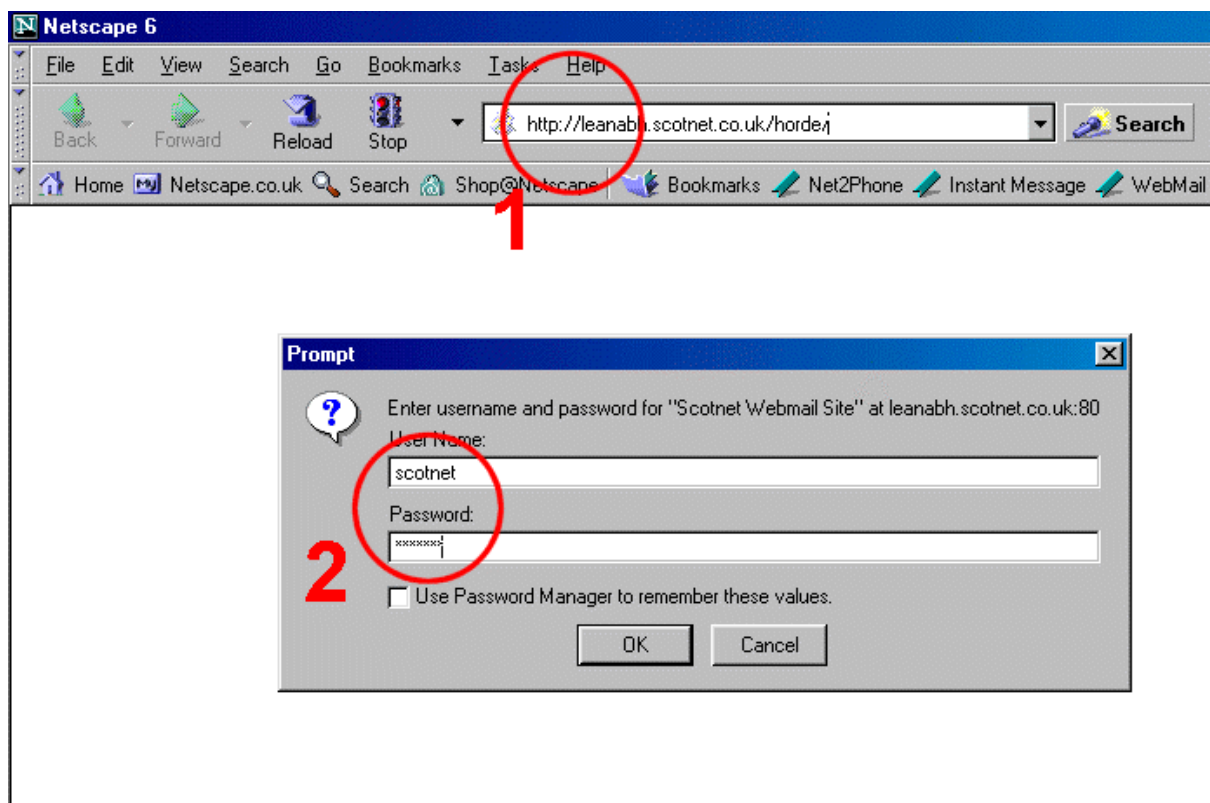
Webmail is an added value service provided to Scotnet Popmail customers.

Webmail is not intended to replace your conventional mail client software (Netscape, Outlook Express etc) or your normal mail collection method.

Webmail enables Popmail customers to view and manage e-mail that is held on the Scotnet Mail Server. Because you are using the web you can manage your e-mail from anywhere as long as you have a connection to the Internet and browser software installed.

Remember that because you will be editing your mail on the Scotnet Mail server; that the messages are not downloaded to your PC until you collect them as normal.

1. Enter **<http://leanabh.scotnet.co.uk/horde>** into the Netscape Navigation Toolbar.



2. The Security Dialogue box prompts you for the Scotnet Network user name and password.

Please contact Scotnet if you do not have the Scotnet Network user name and password'.

Select the OK button.

Why is this box required?

Short Answer

The Security Dialogue box is required to provide a level of security against automated access attempts.

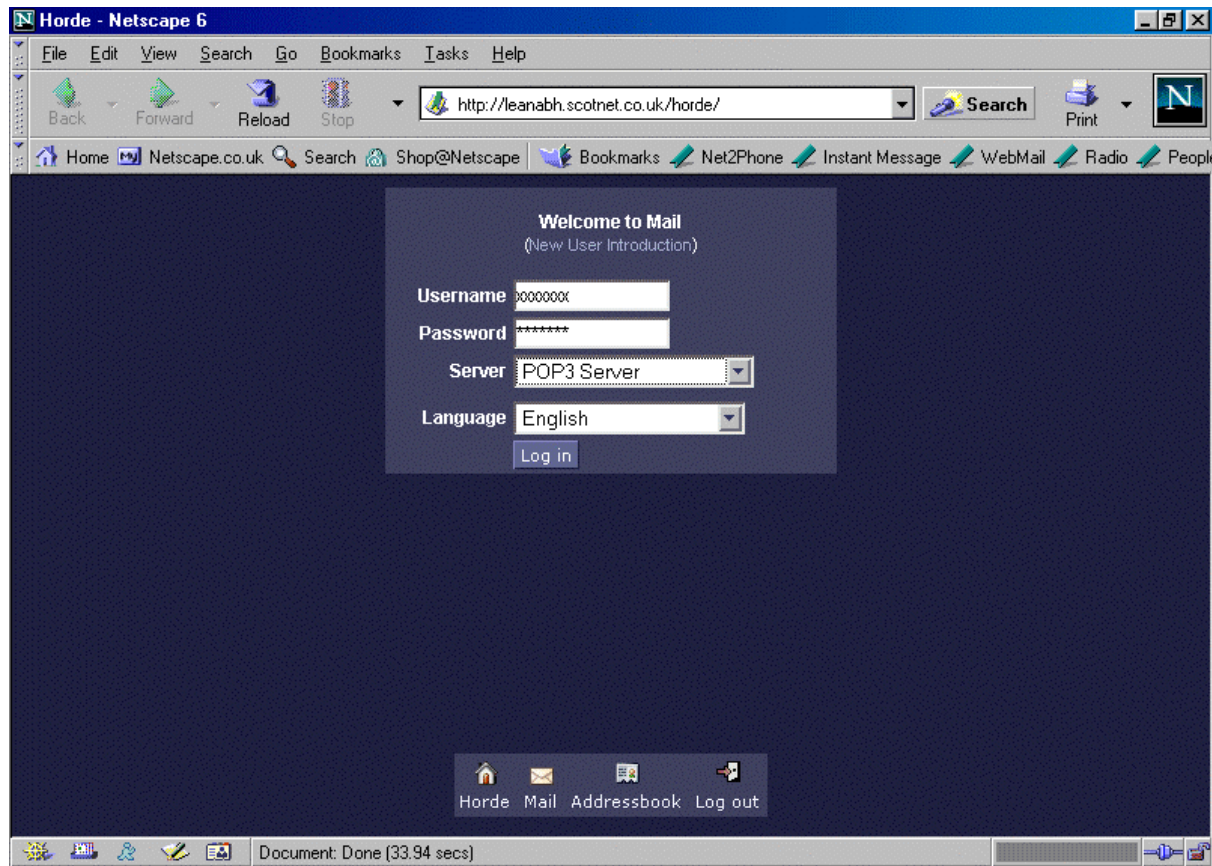
Long Answer

This initial log in screen provides a measure of protection against automated attacks by viruses/worms. These programmes attempt to detect known security weaknesses in many

common web applications. This additional login is only provided to guard against these attacks and is not a replacement for your own login and password.

3. Into the Webmail Dialogue Box enter your:

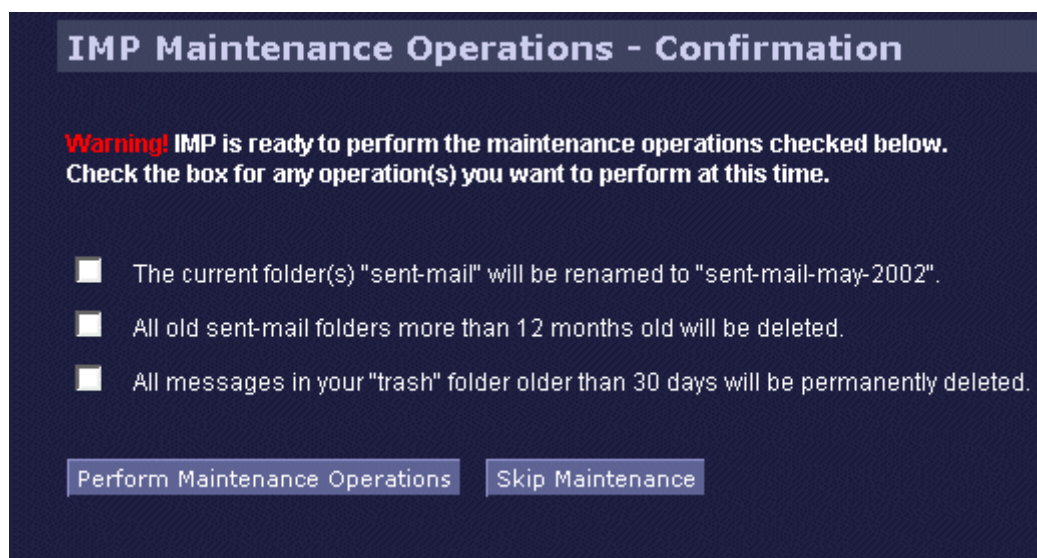
- Scotnet username This is your popmail account name
- Scotnet password This is your popmail password
- Server As shown
- Language As shown



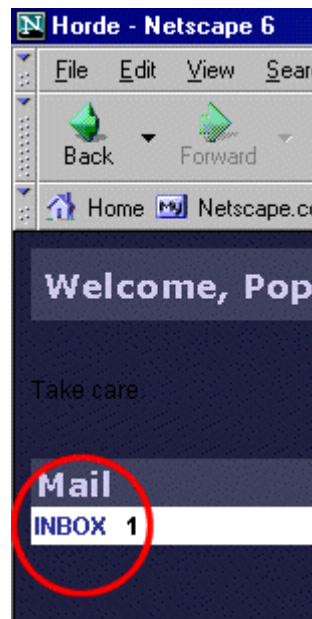
Select the 'Log in' button.

4. Skip the Maintenance Operation by selecting the 'Skip Maintenance' button.

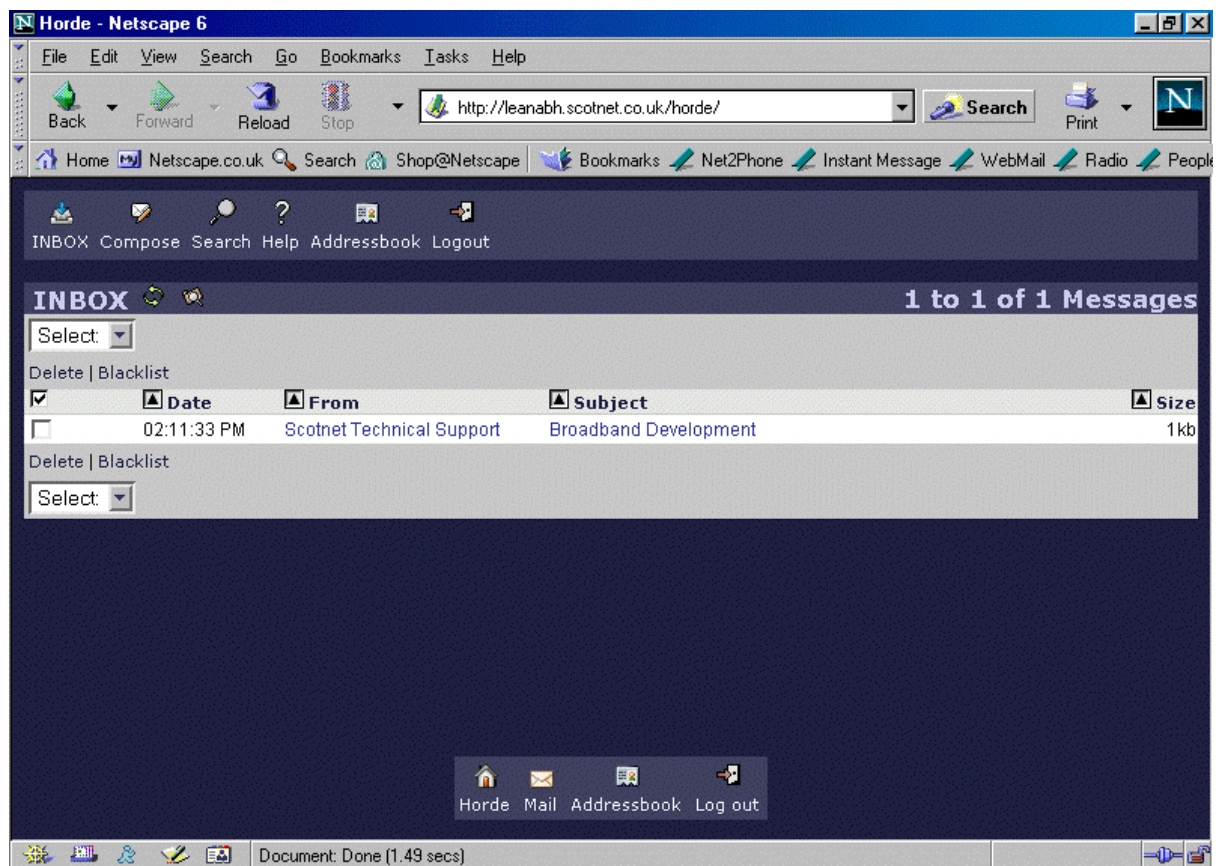
This operation can be undertaken next time you use Webmail, if required.



5. To view your 'Inbox' select the Inbox hyperlink as shown.



With Webmail you are able to view, edit, reply, create and delete mail messages in the same way as using your usual mail software.



Remember that you are processing e-mail directly on the Scotnet Mail Server - it is not on your local PC.

7. To exit Webmail, select 'Log out' from the Webmail menu bar or from the 'Log out' icon located at the bottom of the Inbox.

t: 0845 270 0010

Scotnet Support

e: sales@scotnet.co.uk

